

Tilt & Turn Window Installation Instructions

What you will need:



Straps



A Cart



Suction Cups



Impact Driver



Level



Rubber Mallet



Caulking Gun



Slicker



Drill



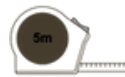
3/16" Drill Bit



Clamps



Painters Tool



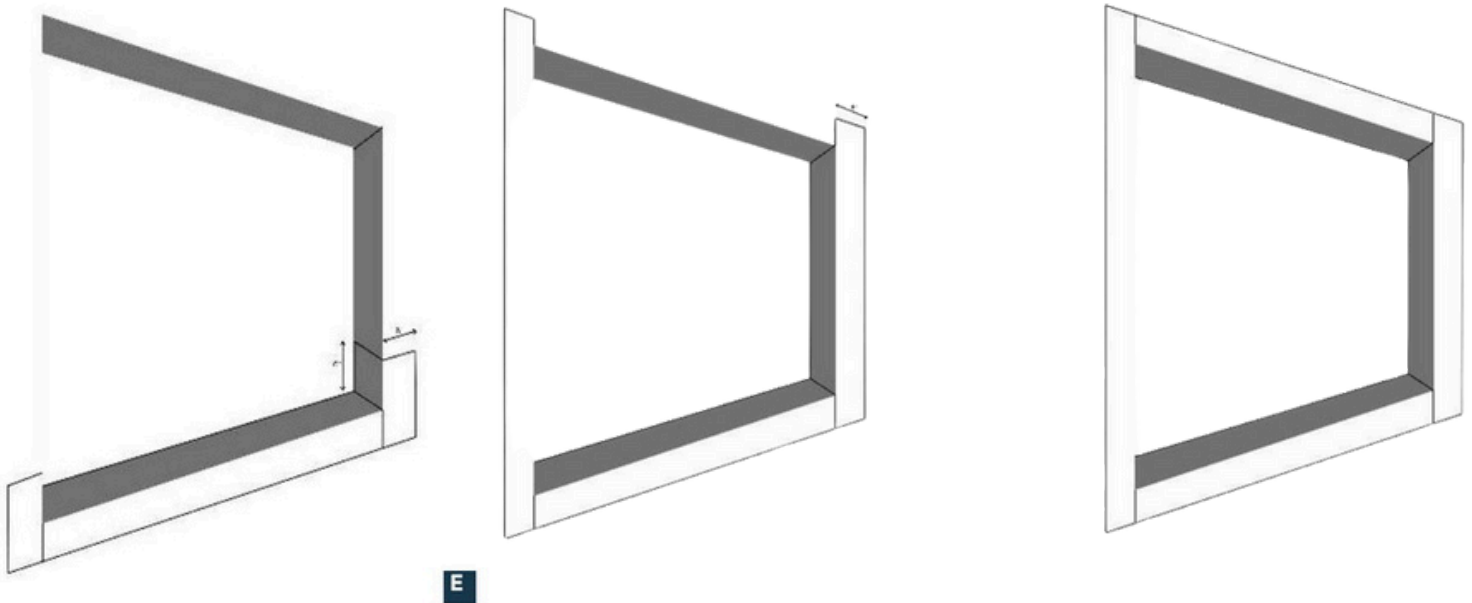
Measuring Tape



- This document should not be considered shop drawings, if the project has shop drawings refer to the shop drawings.
- These instructions are meant for window professional only.

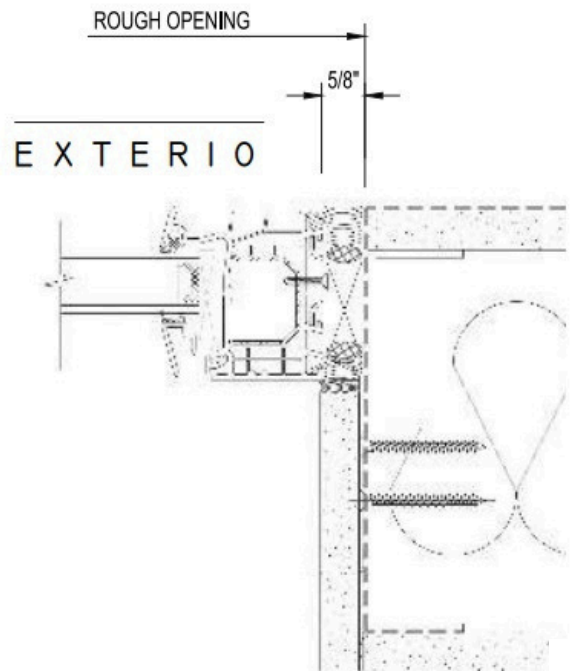
STEP 1: Prep

1. Apply flashing at the sill, Extending up the sides 6" (**E**)
2. Add flashing on the sides, overlapping the 6 inches of the sides
3. Add flashing to the top of the opening and overlap the sides about 6"



New Construction

1. Openings should be waterproofed and ready prior to installation. (**E**)
2. Waterproofing need to pass the interior part of the window so the windows can be caulked properly.
3. Openings should be constructed with RO $1\frac{1}{4}$ larger than the unit size $\frac{5}{8}$ on each side, per shop drawings. (**F**)



F

Replacements

1. Measure the opening 2. Remove old sashes 3. Remove old window frame from opening 4. Clean opening from any debris and old material 5. Dispose of material to proper places 6. Patch any imperfections in the surrounding opening 7. Apply flashing around the opening, starting from the bottom, then sides, then the top. 8. Install window into the opening 9. Shim window properly on all sides 10. Caulk around the exterior of the window for proper seal 11. Fill in the interior gap with caulk or sprayfoam

Note: Premises built before 1978 might have lead paint, contact a professional for help

STEP 2: Install (Strap Anchor Installation)

Materials Needed

- Strap Anchors - provided
- 1 1/4" Zinc Self tapping screws modified truss screws (Clips to window]
- 1 1/4" Zinc Self tapping screws modified truss screws (Clips to metal framing)
- Plastic shims varying sizes 1/16" - 1/4"

Tools Needed

- Impact driver
- Painter's tool (5 in 1)
- Level
- Rubber Mallet
- Measuring tape

Shimming

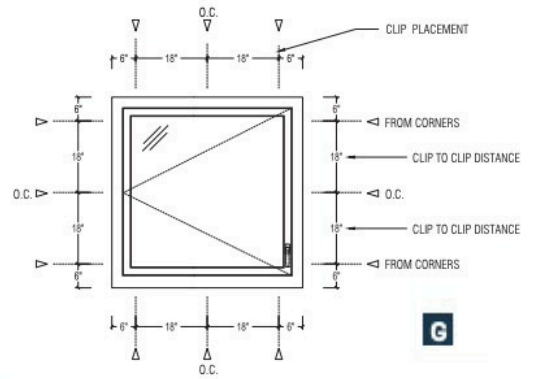
1. Use plastic shims under the clips.



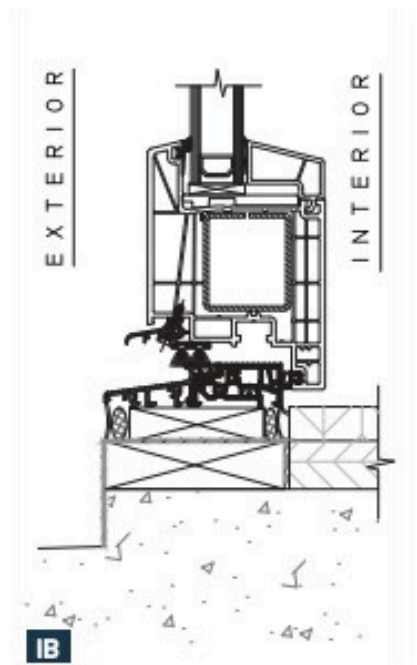
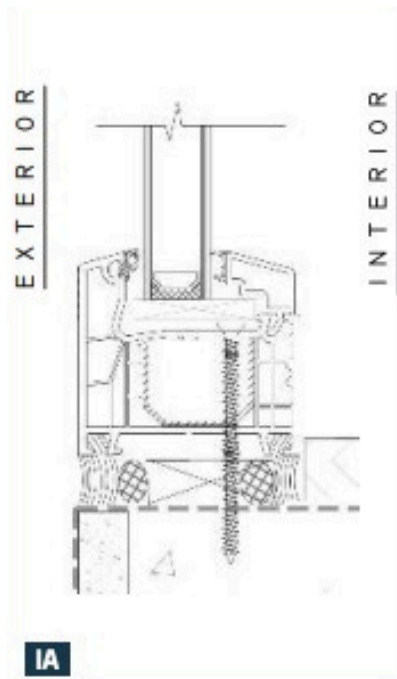
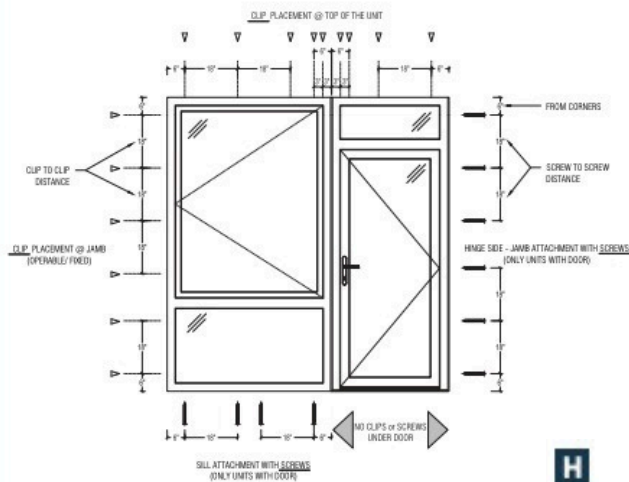
Strap Anchors

1.Strap anchors are included.

2. Strap anchors are to be installed 6" from all corners, 3" and 6" from the mullions, and every 18" in between. **(G)**

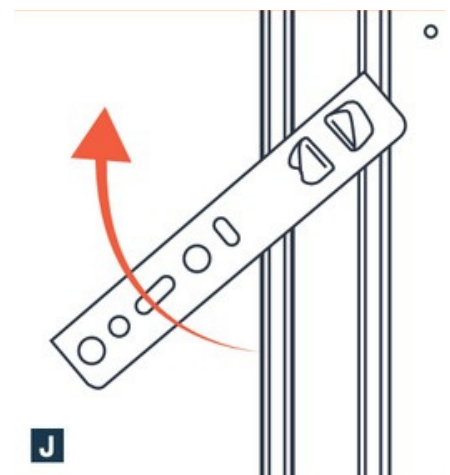


3. At doors, use screws directly through the hinge side, no screws or clips should be used on the door sill. **(H) (I)**



4. Put clip in the slot parallel with the frame, and twist until horizontal. **(J)**

5. Use 1 ¼" Screws to fasten the clips to the frame.



Install

1. Windows need to be level square and plumb.
2. Head heights should align.
3. Windows should align floor to floor.
4. Align exterior of window with the exterior board on the exterior of the framing or cmu.
5. Note: make sure glazing beads are facing the inside (windows are only inswing)
6. Make sure to remove the plastic shipping profile from underneath the windows

STEP 3: Caulking

Materials Needed

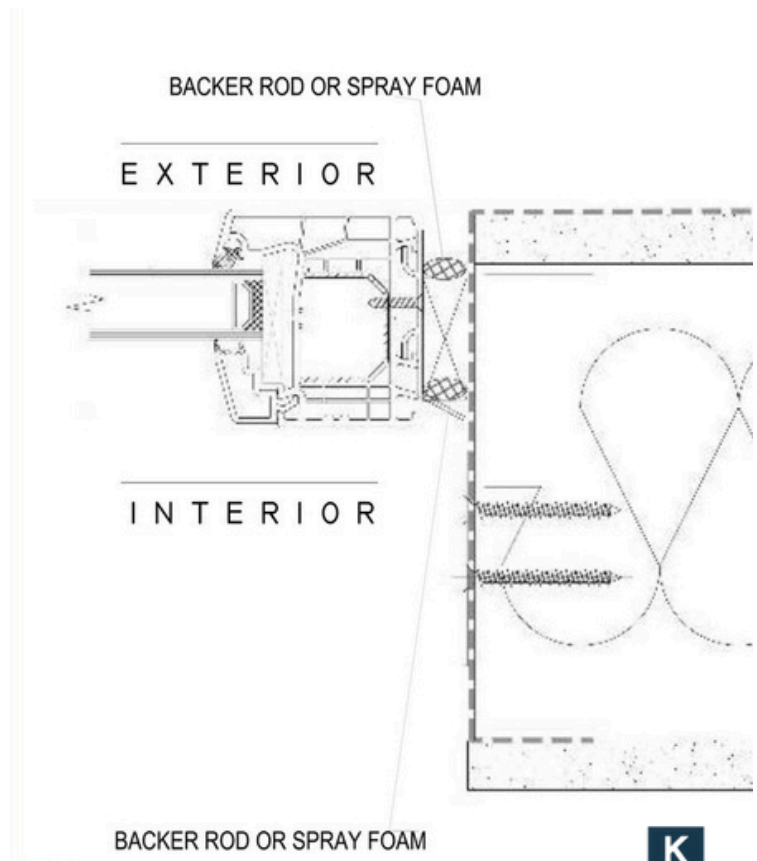
- Caulk (Tremco Spectrem 2 or equivalent)
- Backer Rod or Spray Foam
- Paper towel or cloth
- Painters Tape (for cleaner lines)

Backer Rod

1. Put backer rod or spray foam along the rough opening space. **(K)**
2. If using backer rod make sure it is fairly tight so it doesn't get pushed in easily (3/4 recommended).

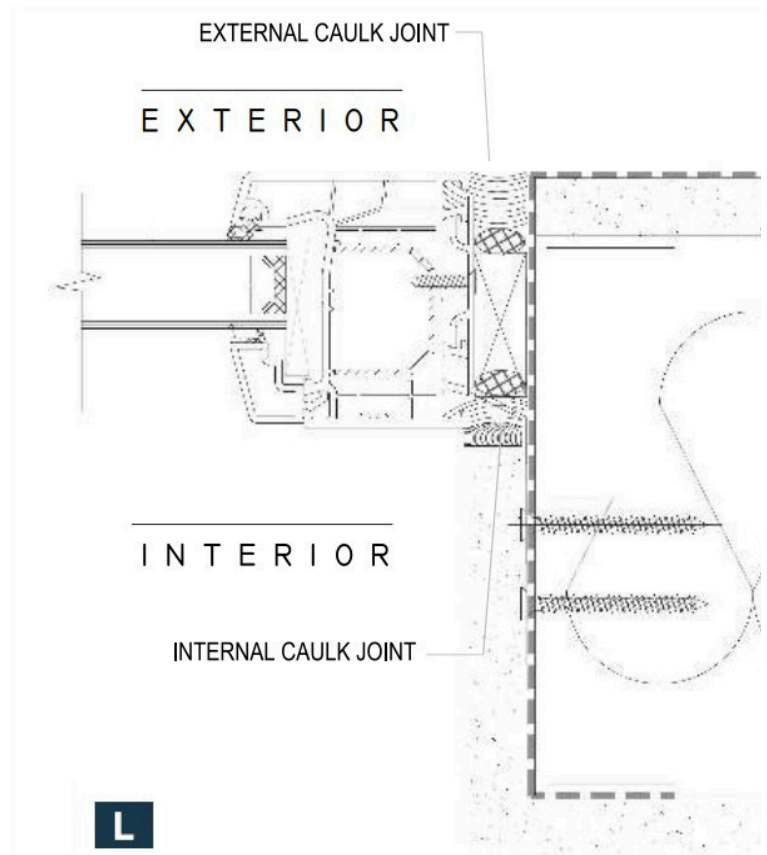
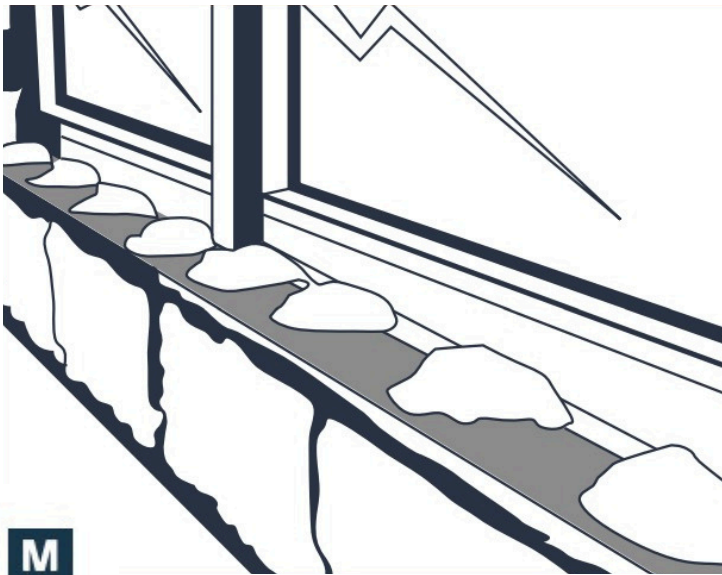
Tools Needed

- Caulking gun
- Slicker



Caulking

1. For a clean look, place painter tape on edge of window and edge of the opening.
2. Use caulking gun with nozzle to seal the window to the opening. (**L**)
3. Use spatula to flatten the caulk joint and make sure it seals properly.
4. Use paper towel or cloth to take off excess caulk.
5. Inspect joint to make sure there are no holes.
6. On the interior make sure to seal the clips and shims as well (**M**)



Install (Nail Fin Installation)

Materials Needed

- 1 1/2" Zinc Self tapping screws modified truss screws (nail fin to metal framing)
- Plastic shims varying sizes 1/16" – 1/4"



Shimming

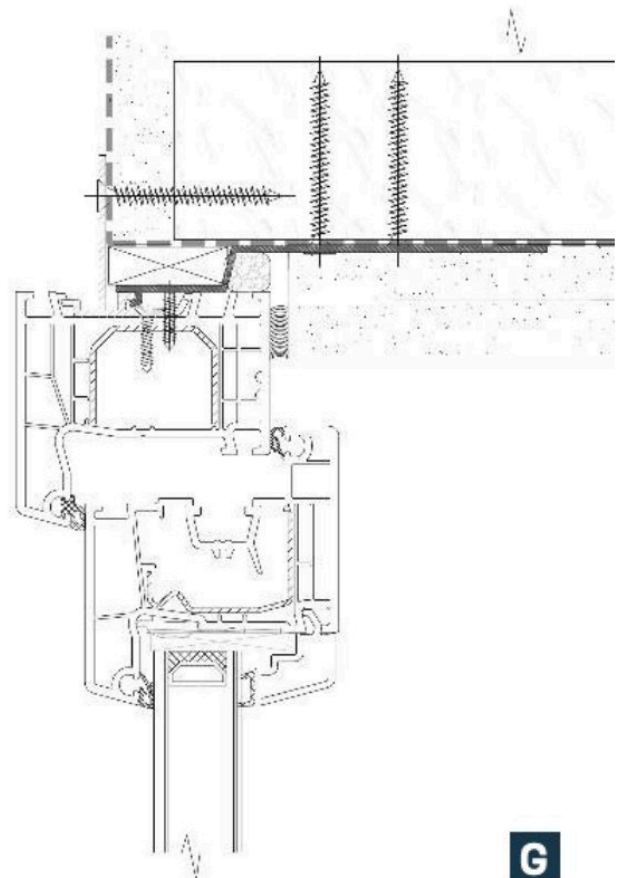
1. Use plastic shims under the clips.

Install

1. Put window on an angle, slide out and pull window in so the nail fin becomes flush on the exterior of the wall
2. Windows need to be level square and plumb.
3. Head heights should align.
4. Windows should align floor to floor.
5. From the exterior, screw nail fin to the exterior of the wall using the 1 1/2" screws **(G)**

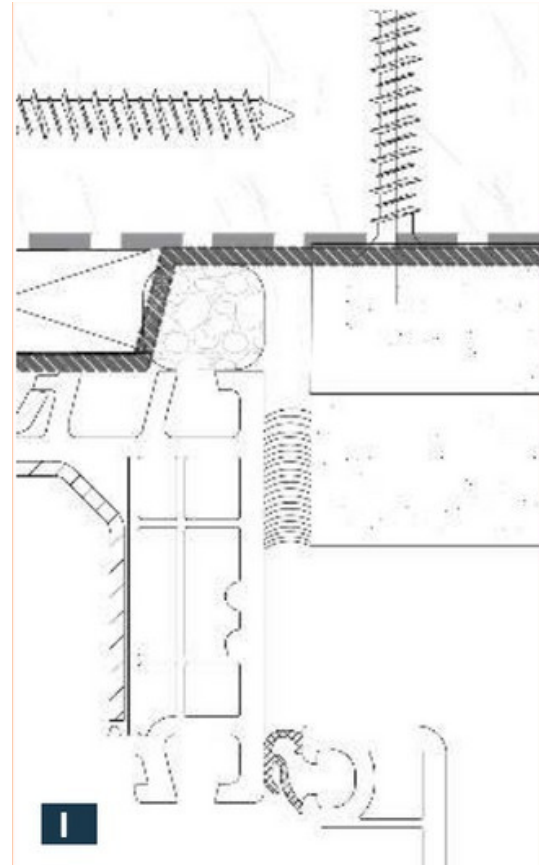
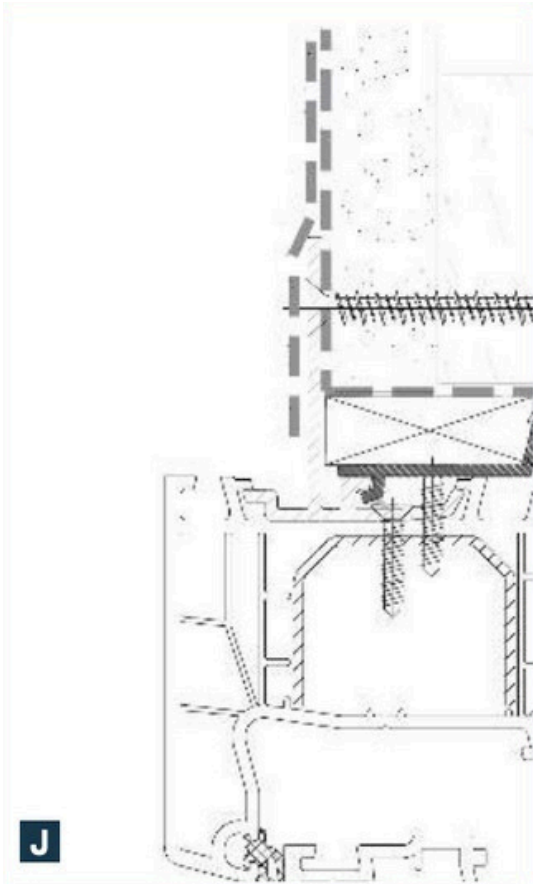
Tools Needed

- Impact driver
- Painter's tool (5 in 1)
- Level
- Rubber mallet
- Measuring tape



6. Cover nail fin with tape (**J**)

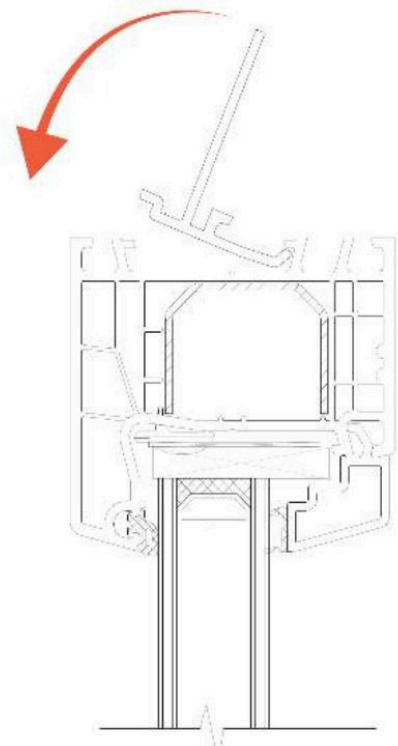
7. Add Spray foam on the interior in the gap between the window and the opening (**I**)



8. For mulled units, snap nail fin in place before installing the window (**H**)

9. Note: make sure glazing beads are facing the inside (windows are only inswing)

10. Make sure to remove the plastic shipping profile from underneath the windows

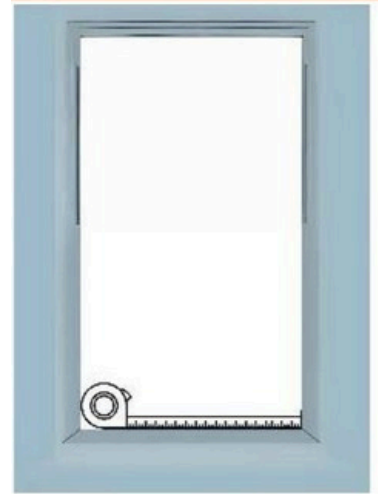


H

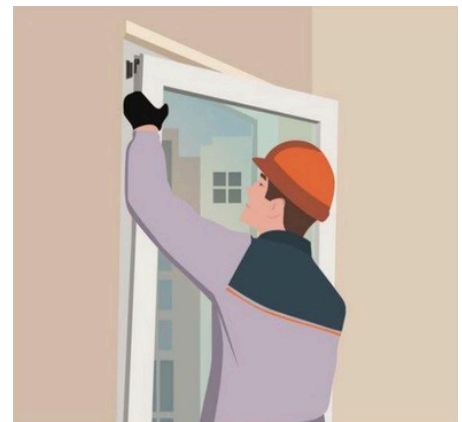
Install (Pocket Installation)

Tools Needed

- Impact driver
- Painter's tool (5 in 1)
- Level
- Rubber mallet
- Measuring tape



1. Score paint on the interior stops
2. Use pry bar to remove interior stops
3. Cut balance cords (if present) and let the weights slide down,
4. Remove window sashes
5. Remove cord pulleys (if present)
6. Inspect opening for any broken or deteriorating parts
7. Clean opening from any debris
8. Confirm opening is about 1/2" to 1" larger than the window
9. Apply sealant around the windows opening
10. Set the window in the opening square and plumb
11. Shim windows in place and screw through the frame into the jambs
12. Add sprayfoam in the gaps on the interior



STEP 4: Connections

Materials Needed

- Mullion - provided
- 3" #12 self tapping screw flat head
- 2" self tapping screw flat head
- Caulk (Spectrem 2 or equivalent)

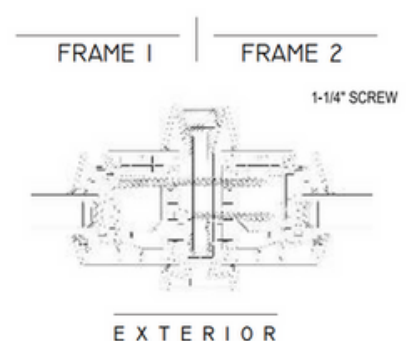
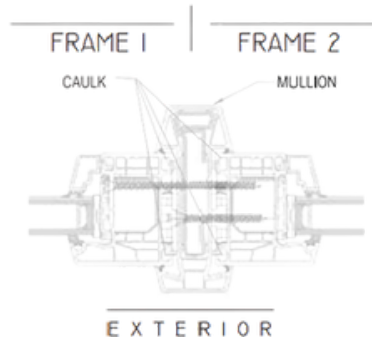
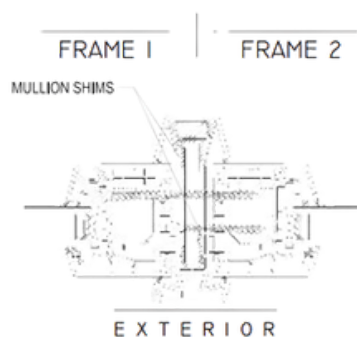
Tools Needed

- Impact driver
- Painter's tool (5 in 1)
- Level
- Rubber mallet
- Measuring tape

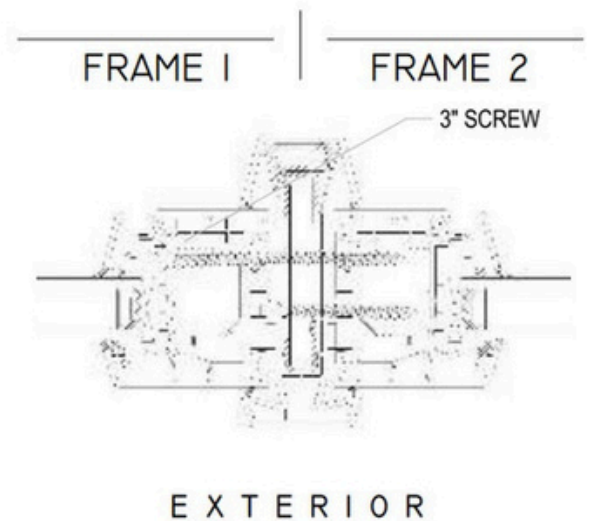
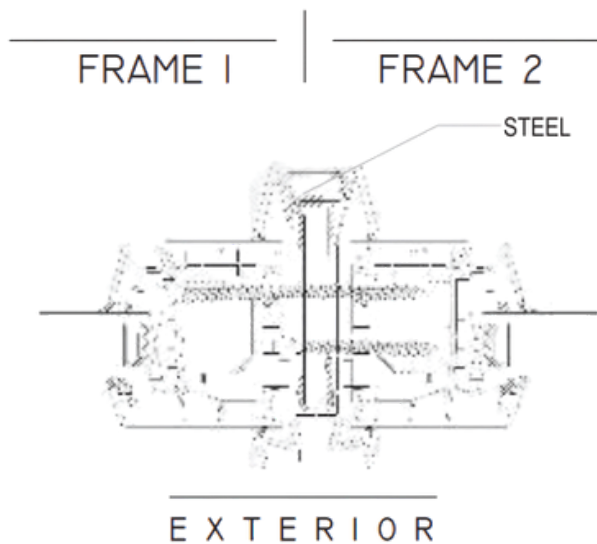


VERTICAL AND HORIZONTAL MULLIONS

1. Remove glazing beads using the painters tool.
2. If glass is more than 1 1/4" in thickness, remove glass as well.
3. Place mullion shims on frame 1 every 16 inches. **(N)**
4. Put a caulk joint along the interior and exterior of frame 1. **(O)**
5. Using the 2" screws fasten the mullion to Frame 1. **(P)**
6. Add screw every 16 inches.
7. Place mullion shims in frame 2 every 16 inches. **(N)**
8. Add caulk joint on the interior and exterior of frame **(O)**
9. Clamp frame 1 and 2 together.



10. Using the drill and metal bit, screw a hole from frame 1 through the first part of frame 2s reinforcement steel (hole should be through 4 layers of steel). **(Q)**
11. Holes should be made every 16 inches.
12. Use 3" screws in all holes to fasten construction together. **(R)**
13. Once all screws are fastened, clamps can be removed



Q

R

VERTICAL AND HORIZONTAL MULLIONS

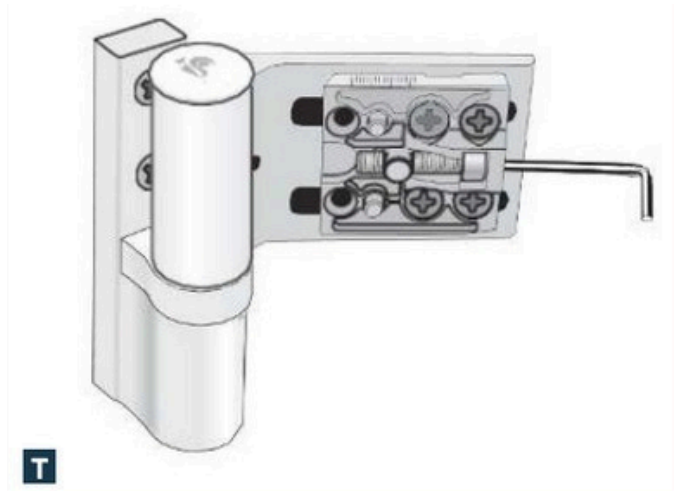
1. Place handle on the hole and line it up pointing down. **(S)**
2. Twist cover to reveal screw hole.
3. Use screwdriver/impact driver to screw in the 2 provided screws.
4. Twist cover back.



S

DOOR HANDLE INSTALL

1. Slide the cylinder in the slot.
2. Use the 2 screws to secure the plates.



DOOR HINGE ADJUSTMENTS

1. Remove hinge cover.
2. Use allen wrench to adjust the hinges horizontally (**T**) and vertically. (**U**)
3. Return hinge cover.



WEEP HOLE COVERS

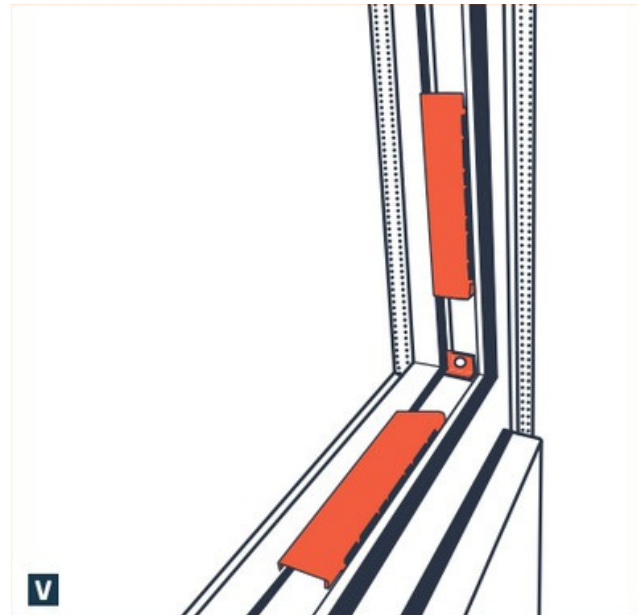
1. Weep hole covers will come separately with the hardware.
2. Click weep hole cover into the slots
3. Make sure the open slot is facing down

For questions, please call Window Well Supply Customer Service Monday through Friday, 8:00AM – 5:00PM CST at (262) 633-3707.

Service Maintenance

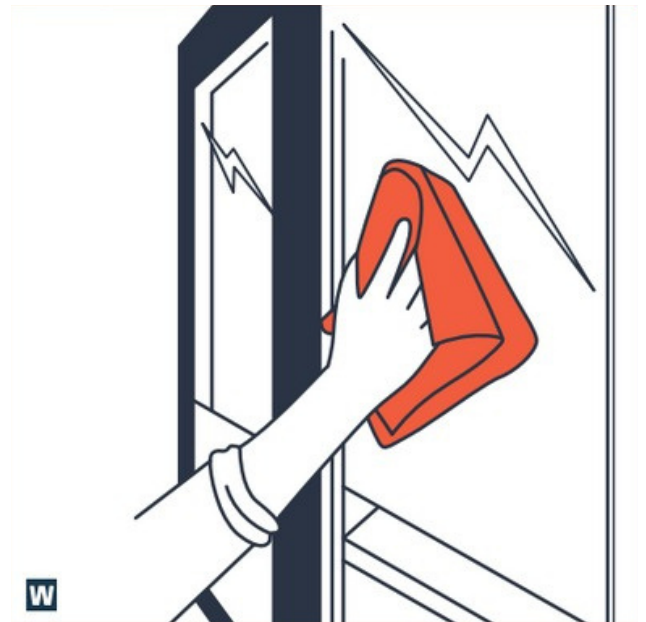
GLASS REPLACEMENT

1. Weep hole covers will come separately with the hardware.
2. Click weep hole cover into the slots
3. Make sure the open slot is facing down



MAINTENANCE

1. Clean windows regularly.
2. Do not use any sharp objects to clean windows.
3. Use plastic glass cleaner.
4. Use paper towels or a soft cloth.
5. Clean window hardware regularly.
6. Oil hardware regularly.
7. Do not force window open or closed.



For questions, please call Window Well Supply Customer Service
Monday through Friday, 8:00AM – 5:00PM CST at (262) 633-3707.